



Axia 2.5 Résille

Axia 2.5 Résille

Le BMA Axia 2.5 est équipé d'un dossier en résille intégrant un soutien lombaire.

Le tissu en résille est disponible en six coloris inspirés des forêts, des prairies, des fleurs, de la pierre, du béton et de la brique. L'utilisation de coloris présents dans l'environnement crée un style moderne et raffiné, renforcé par le capitonnage à choisir parmi nos gammes de tissus Standard, Extended ou Curated.

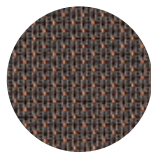


Caractéristiques et avantages

Coloris du tissu en résille disponibles pour le RH Axia 2.5:



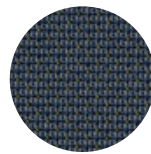
JOIN 32



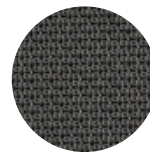
JOIN 14



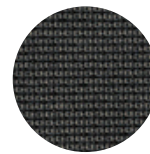
JOIN 70



JOIN 75



JOIN 11



JOIN 10

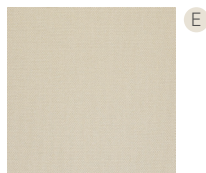




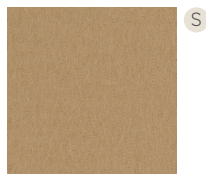
Axia 2.5 Résille_JOIN 32



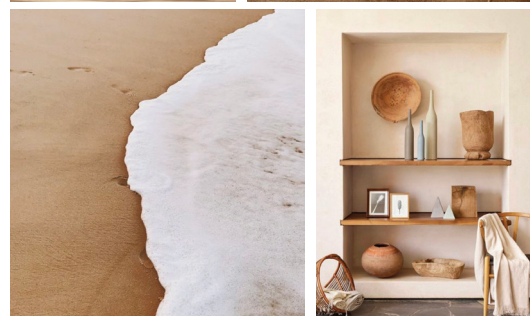
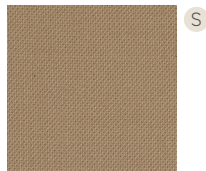
Steelcut 3_STT240



Focus_FC61039



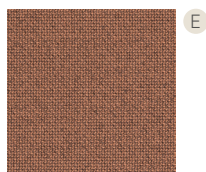
Select_SC61184



Axia 2.5 Résille_JOIN 14



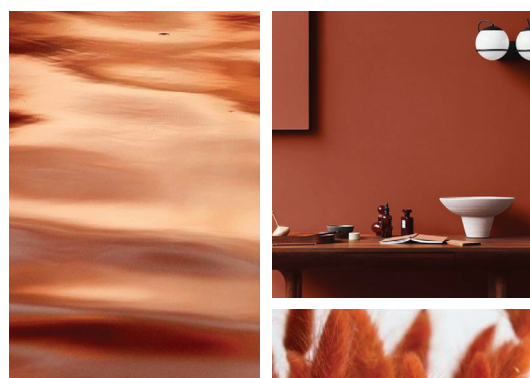
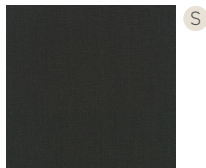
Cura_CU61257



Focus_FC61036



Steelcut trio 3_STT383



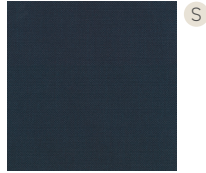
Axia 2.5 Résille_JOIN 70



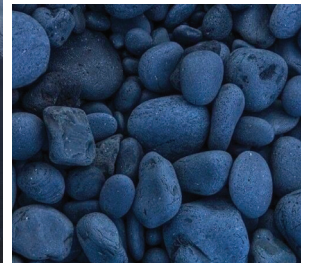
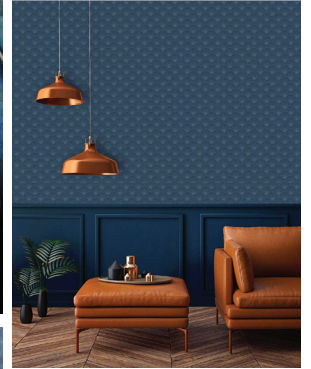
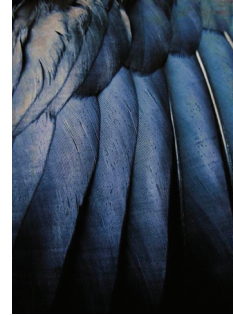
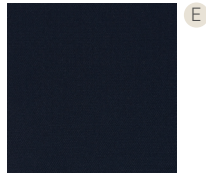
Steelcut trio 3_STT716



Steelcut trio 3_STT796



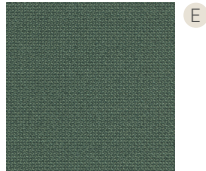
Steelcut 3_STT775



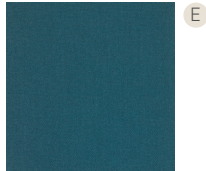
Axia 2.5 Résille_JOIN 75



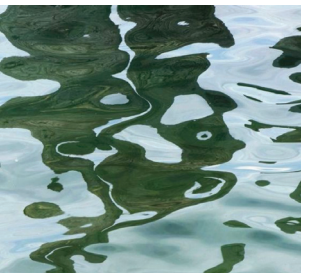
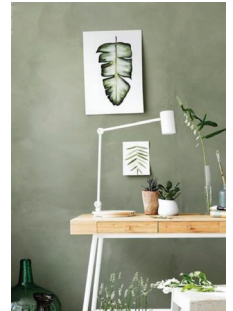
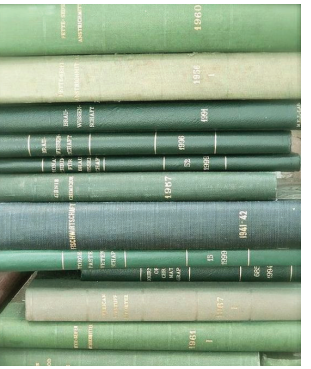
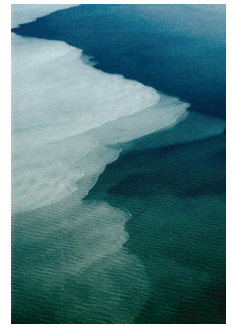
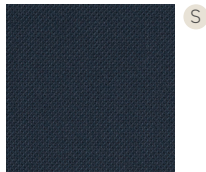
Cura_CU68182



Steelcut 3_STT780



Select_SC66194



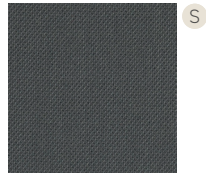
Axia 2.5 Résille_JOIN 11



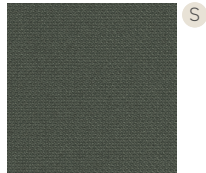
Steelcut 3_STT155



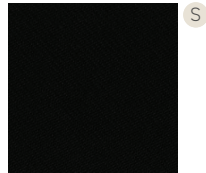
Select_SC60003



Cura_CU60109



Oceanic_OCI001



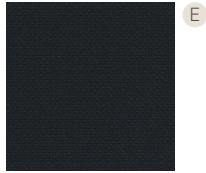
Axia 2.5 Résille_JOIN 10



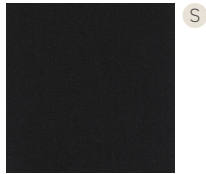
Select_SC60003



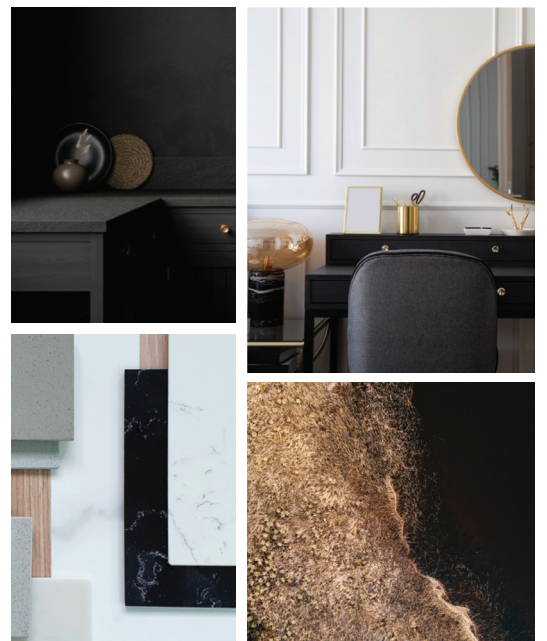
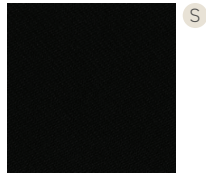
Cura_60111



Steelcut 3_STT190



Oceanic_OCI001





[FLOKK.COM/BMA](https://flokk.com/bma)